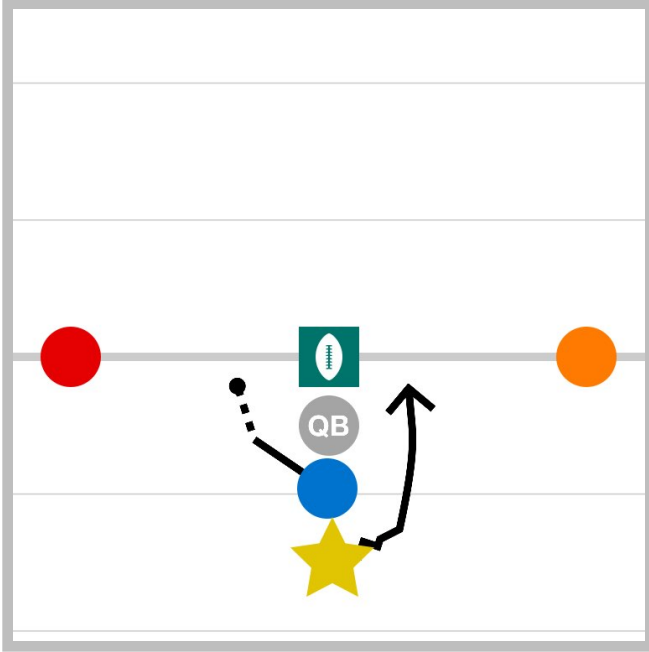
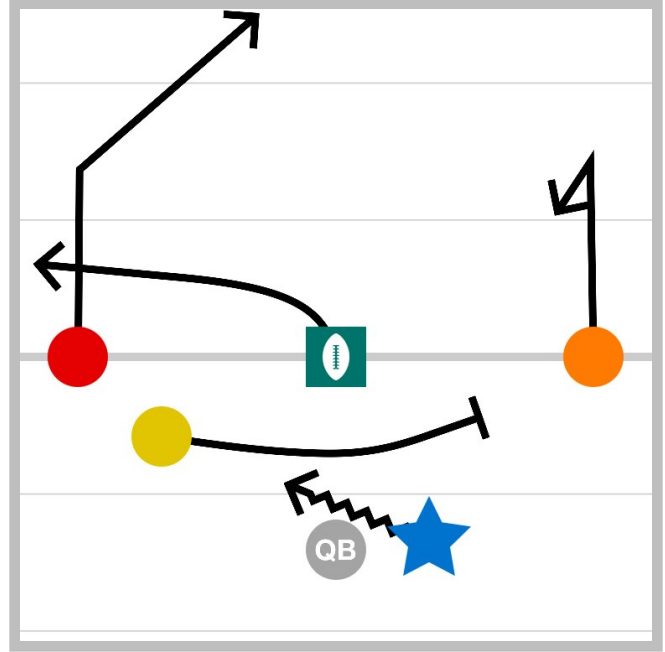


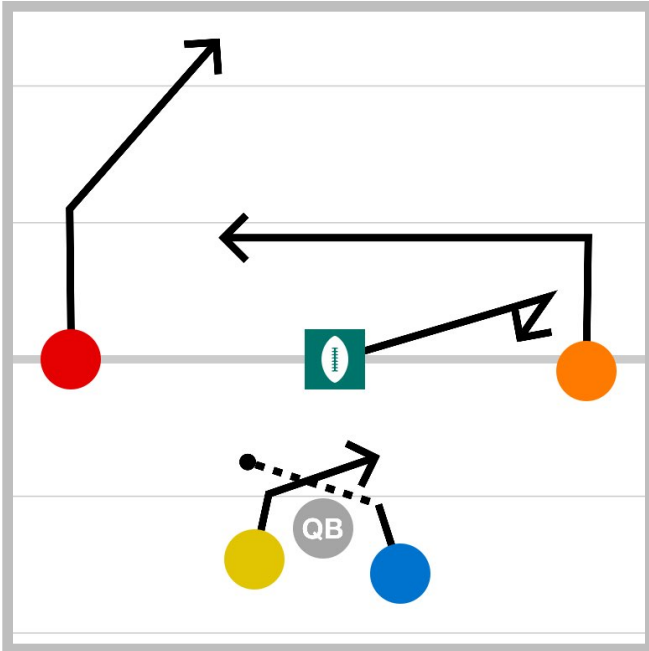
**1 I-FORM DIVE**



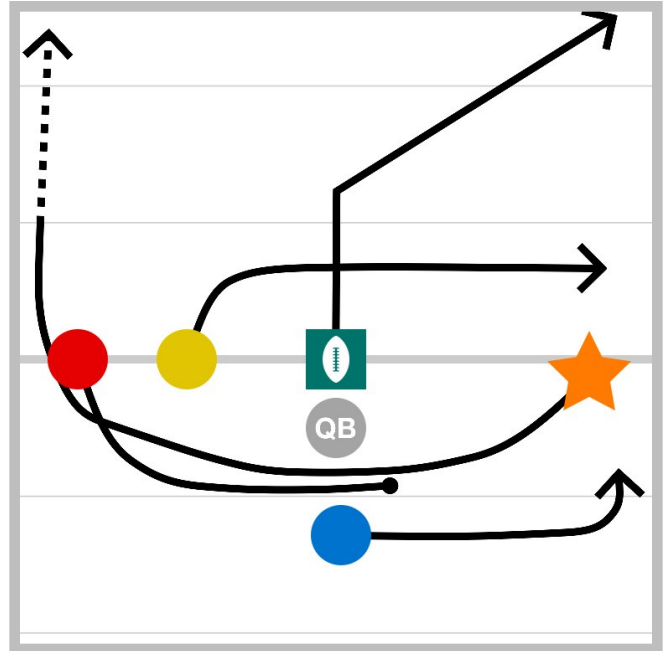
**2 OFF LEFT**



**3 Split Handoff**



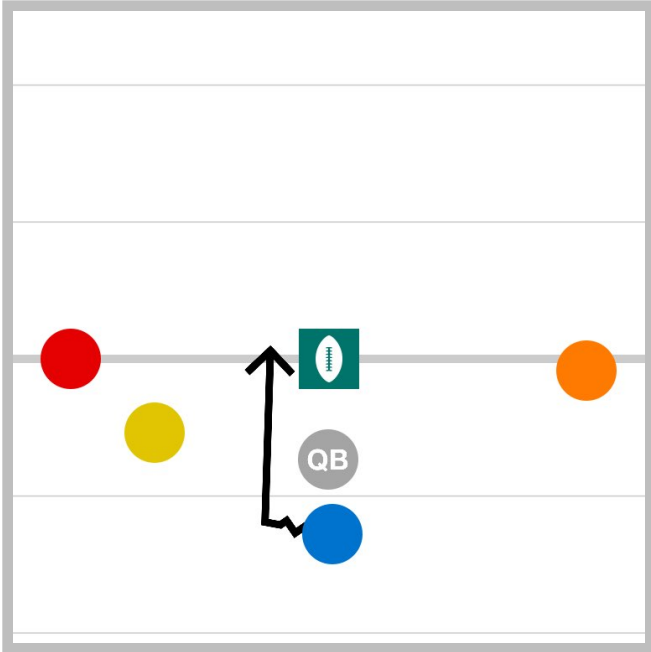
**4 Reverse**



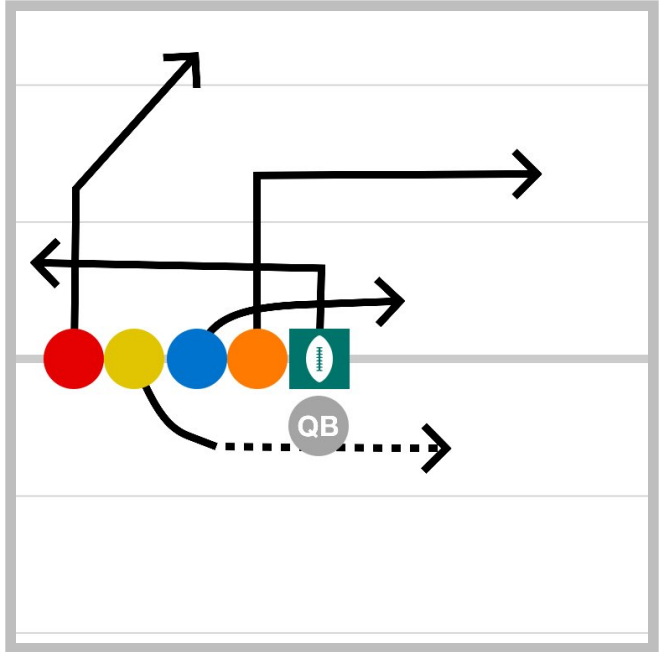
**CROSSOVER SAMPLE PLAY...**

Run

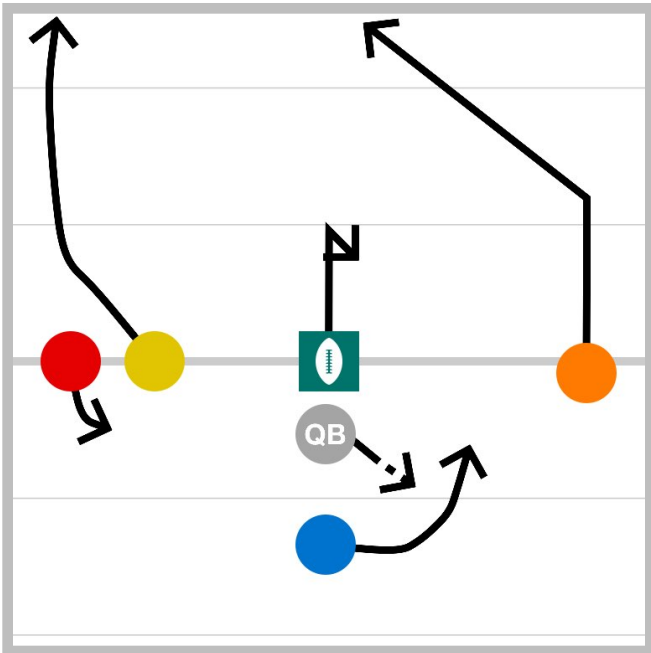
**5** Pistol Dive



**6** O-LINE OPTION



**7** Pitch



**CROSSOVER SAMPLE PLAY...**

Run

- 1** I-FORM DIVE  
No notes for this play
- 2** OFF LEFT  
No notes for this play
- 3** Split Handoff  
No notes for this play
- 4** Reverse  
Play will go to ORANGE, but could go to RED or BLUE. After the handoff to RED, that player could pitch it back to BLUE to pass or run with it.
- 5** Pistol Dive  
No notes for this play
- 6** O-LINE OPTION  
No notes for this play
- 7** Pitch  
QB can pitch to RB or can fake and throw to one of the options outside/center running a short hook.

## **CROSSOVER SAMPLE PLAY...**

Run